

# WINDERMERE FARMS PERCHERONS

SPRING MILLS - PENNSYLVANIA



# FOUNDATIONS

1962

*...TURNING THE PAGES OF OUR HISTORY TO BUILD THE FUTURE...*

WINDERMERE FARMS ESTABLISHED



## **TROTting HIGHER. DRIVING HARDER. MOVING FORWARD.**

AT WINDERMERE FARMS, OUR BREEDING PHILOSOPHY IS ONE THAT PLACES EMPHASIS AND PRIORITY ON A COMMITMENT AND DEDICATION TOWARD ACHIEVING THE TYPE OF FORWARD PROGRESS THAT CREATES MARKED, GENERATIONAL IMPROVEMENTS IN THE QUALITY, SIZE, ATHLETICISM, AND NATURAL ABILITY OF THE REGISTERED PERCHERONS THAT ARE PRODUCED FROM OUR BREEDING PROGRAM.

SEEKING TO BREED TOMORROW'S PERCHERONS TODAY, AND OPERATING A PERCHERON PROGRAM WITH A LEGACY MINDSET, REQUIRES CAREFUL AND DELIBERATE FORETHOUGHT AND A CLEAR VISION OF ONE'S GOALS. IN TURN, THAT FORWARD THINKING AND CLARITY PROVIDES AN ACCURATE AND RELIABLE MEANS BY WHICH TO NAVIGATE THE MULTITUDE OF CHOICES AND CHALLENGES THAT ARE ALWAYS ENCOUNTERED ALONG THE WAY TO SUCCESS IN PERCHERON BREEDING.

AS IMPORTANT AS IT IS TO BE FORWARD THINKING IN YOUR APPROACH TO BREEDING, WE ALSO BELIEVE THAT IT IS NECESSARY TO KNOW, UNDERSTAND AND REMEMBER WHERE YOU HAVE BEEN - IN ORDER TO HAVE A BETTER UNDERSTANDING ABOUT YOUR PRESENT POSITION, AND TO KNOW WHERE YOU ARE HEADED, AND HOW YOU PLAN TO SUCCEED IN GETTING THERE.

FOR THE PAST SIX DECADES, (SPANNING THREE GENERATIONS OF OUR FAMILY), WE HAVE BEEN STRIVING TO BREED, RAISE AND SHOW PERCHERON DRAFT HORSES OF THE VERY HIGHEST CALIBER, HAILING FROM THE MOST PROVEN, PROLIFIC AND PROSPEROUS BLOODLINES OF THE PAST AND PRESENT, ALIKE. THE FOLLOWING PAGES WILL PROVIDE YOU WITH A HISTORY OF MANY OF THE EXTREMELY PREPOTENT STALLIONS AND MARES THAT HAVE PLAYED A SIGNIFICANT ROLE IN MOLDING OUR BREEDING PROGRAM INTO WHAT IT IS TODAY. THE SOLID FOUNDATION OF OUR PROGRAM HAS BEEN BUILT UPON THEIR QUALITY, ATHLETICISM, GENETIC DOMINANCE AND CONSISTENCY OF PRODUCTION RECORDS. THEY HAVE PLACED OUR BREEDING PROGRAM ON AN UPWARD TRAJECTORY INTO THE FUTURE, AND IN SO DOING, THESE TIME-TESTED, PROVEN CHAMPIONS HAVE ALSO CARVED OUT A PLACE FOR THEMSELVES IN HISTORY THROUGH THE POSITIVE INFLUENCE AND CONTRIBUTIONS THAT THEY HAVE PROVIDED TO THE PERCHERON BREED, AS A WHOLE.

WE WELCOME YOU TO READ MORE ABOUT OUR FOUNDATIONS HERE AT WINDERMERE FARMS; AND, WE HOPE THE DIRECT RELATIONSHIP BETWEEN OUR HISTORY AND OUR BREEDING PROGRAM'S DIRECTION FOR THE FUTURE WILL BECOME EXTREMELY EVIDENT ON THE PAGES TO FOLLOW.

# BREEDING PREMIER PERCHERON DRAFT HORSES HAS BEEN OUR PASSION AND PURSUIT FOR OVER HALF A CENTURY.

BELOW IS A LIST OF HORSES BRED BY WINDERMERE FARMS, EXHIBITED BY WINDERMERE FARMS, OR BOTH, WHICH HAVE BEEN NAMED

## ALL-AMERICAN, RESERVE ALL-AMERICAN OR 1ST HONORABLE MENTION:

### **BRED BY WINDERMERE FARMS**

1. BELLE RYAN VELVET (RESERVE)
2. HAZELWOOD'S LADY'S LYNDA (ALL-AMERICAN)
3. KING CONG'S COOKIE (RESERVE)
4. OAK HAVEN'S NEW EXPRESSION (ALL-AMERICAN)
5. SKIP'S CHALLENGER (2X ALL-AMERICAN)
6. WINDERMERE'S ADRENALIN (2X ALL-AMERICAN)
7. WINDERMERE'S ATTITUDE (RESERVE)
8. WINDERMERE'S BINGO (RESERVE)
9. WINDERMERE'S BLACKOUT (2X ALL-AMERICAN)
10. WINDERMERE'S BLACK VELVET (ALL-AMERICAN)
11. WINDERMERE'S BOONE (RESERVE)
12. WINDERMERE'S CADENCE (ALL-AMERICAN)
13. WINDERMERE'S CAMILLA (RESERVE)
14. WINDERMERE'S CARRY ON (RESERVE)
15. WINDERMERE'S CASSANDRA (4X ALL-AMERICAN)
16. WINDERMERE'S COBA (RESERVE)
17. WINDERMERE'S CROW (RESERVE)
18. WINDERMERE'S DEIDRE (6X ALL-AMERICAN)
19. WINDERMERE'S DESIGN (1ST HON. MENTION)
20. WINDERMERE'S DESIRE (ALL-AMERICAN)
21. WINDERMERE'S DUKE'S EXCLAMATION (RESERVE)
22. WINDERMERE'S ELEGANCE (RESERVE)
23. WINDERMERE'S ELIMINATOR (ALL-AMERICAN)
24. WINDERMERE'S EVANGELIST (ALL-AMERICAN)
25. WINDERMERE'S FREYA (ALL-AMERICAN HITCH HORSE)
26. WINDERMERE'S GLADIATOR (1ST HON. MENTION)
27. WINDERMERE'S GLAMOR GIRL (ALL-AMERICAN)
28. WINDERMERE'S GOLIATH (RESERVE)
29. WINDERMERE'S HIGH OCTANE (RESERVE)
30. WINDERMERE'S HILDA (RESERVE)
31. WINDERMERE'S INFERNO (2X RESERVE)
32. WINDERMERE'S INTRUDER (ALL-AMERICAN)
33. WINDERMERE'S INVINCIBLE (1ST HON. MENTION)
34. WINDERMERE'S JASMINE (ALL-AMERICAN)
35. WINDERMERE'S JEANETTA (ALL-AMERICAN)

### **BRED BY CONTINUED...**

36. WINDERMERE'S JESS (ALL-AMERICAN)
37. WINDERMERE'S JOY (2X ALL-AMERICAN)
38. WINDERMERE'S JUST INCREDIBLE (RESERVE)
39. WINDERMERE'S KING ARTHUR (ALL-AMERICAN)
40. WINDERMERE KING CONG (2X ALL-AMERICAN)
41. WINDERMERE'S KINZEE (1ST HONORABLE MENTION)
42. WINDERMERE'S LADDY (2X ALL-AMERICAN)
43. WINDERMERE'S LADY'S LUCY (ALL-AMERICAN)
44. WINDERMERE'S LIMITED EDITION (ALL-AMERICAN)
45. WINDERMERE'S LINSY (1ST HONORABLE MENTION)
46. WINDERMERE'S MARKIE MAID (1ST HON. MENTION)
47. WINDERMERE'S MORNING RAIN (2X RESERVE)
48. WINDERMERE'S NAVIGATION (ALL-AMERICAN)
49. WINDERMERE'S NORTH AMERICAN MAID (ALL-AMERICAN)
50. WINDERMERE'S OZZIE (2X 1ST HON. MENTION)
51. WINDERMERE'S PAISLEY (RESERVE)
52. WINDERMERE'S QUEEN FOR A DAY (ALL-AMERICAN)
53. WINDERMERE'S REEVA (RESERVE)
54. WINDERMERE'S ROSIE (RESERVE)
55. WINDERMERE'S SERENA (ALL-AMERICAN)
56. WINDERMERE'S SET THE TEMPO (ALL-AMERICAN)
57. WINDERMERE'S SHIRLEY (1ST HON. MENTION)
58. WINDERMERE'S SILVA (1ST HON. MENTION)
59. WINDERMERE SPRING MILL (1ST HON. MENTION)
60. WINDERMERE'S TAYLER MAID (ALL-AMERICAN)
61. WINDERMERE'S TRADEMARK (RESERVE)
62. WINDERMERE'S TURBO (ALL-AMERICAN)
63. WINDERMERE'S TURN THE PAGE (1ST HON. MENTION)
64. WINDERMERE'S VICTORIA (ALL-AMERICAN)
65. WINDERMERE'S WINCREDIBLE (RESERVE)
66. WINDERMERE'S XENA (1ST HON. MENTION)
67. WINDERMERE'S ZULY (ALL-AMERICAN)
68. DANNY BOY'S AMBRE-A-GLOW (RESERVE) (CLYDESDALE)

### **OWNED & EXHIBITED BY WINDERMERE FARMS**

69. F.P. REIN (ALL-AMERICAN)
  70. F.P. REVOLVER (1ST HONORABLE)
  71. ANDERSON'S BENTLEY (5X ALL-AMERICAN)
  72. BLUE RIBBON FARMS NAVAJO (1ST HON. MENTION)
  73. BLUE RIBBON FARMS PRINCE (ALL-AMERICAN)
  74. BP DELUXE (ALL-AMERICAN)
  75. BRIAR HILL TRADEMARK (ALL-AMERICAN)
  76. CAMILLE (1ST HON. MENTION)
  77. CEDAR DREAM TRADEMARK'S RASCAL (ALL-AMERICAN)
  78. COMMET'S SUSANNA (RESERVE)
  79. DONALD'S SHERRI LYN (1ST HON. MENTION)
  80. FOREST GROVE AMY'S AREBA (RESERVE)
  81. JOHNSHART'S RJ (1ST HON. MENTION)
  82. JOHNSHART'S BELLA (RESERVE)
  83. JSC'S TIFFANY (RESERVE)
  84. MARISSA LAET (1ST HON. MENTION)
  85. MCGRATH'S VANNA TUDE (RESERVE)
  86. MCR BRITTANY (RESERVE)
  87. MEADOWLARK CRISIS (ALL-AMERICAN)
  88. MEADOWLARK'S MIDNIGHT CYCLONE (2X ALL-AMERICAN)
  89. NATHAN'S LADY LYN (1ST HON. MENTION)
  90. NINJA'S ANGEL TAMMY (1ST HON. MENTION)
  91. ROCKETS ALL-STAR VALENTINE (ALL-AMERICAN)
  92. SQUARE C RANCH PRISCILLA (RESERVE ALL-AMERICAN)
  93. WALKERBRAE JAKE'S YUKON (1ST HON. MENTION)
  94. VALLEY VISTA STRIKER (2X 1ST HON. MENTION)
  95. WALKERBRAE SNIPER (2X ALL-AMERICAN)
  96. WAPSI VIEW FANTASY (ALL-AMERICAN)
  97. WINDSONG'S GAMBLER (ALL-AMERICAN)
- ### **EXHIBITED UNDER LEASE BY WINDERMERE FARMS**
98. FAIRVIEW ROCKETEER (ALL-AMERICAN)
  99. ROSEDALE'S BETHANY (RESERVE)
  100. SNOWDAME'S MR. BISHOP (RESERVE ALL-AMERICAN)
  101. WESTWIND CONG'S SARAH GRACE (1ST HON. MENTION)
  102. WINDWARD'S VENETTA (RESERVE)

# WORLD CHAMPIONS & NATIONAL CHAMPIONS

WE STRIVE TO BREED AND RAISE PERCHERONS THAT HAVE THE ABILITY TO BOTH COMPETE AND EXCEL AT THE HIGHEST LEVELS OF COMPETITION. BELOW IS A LIST OF THE WORLD AND NATIONAL CHAMPIONSHIP TITLES EARNED BY WINDERMERE BRED AND/OR OWNED PERCHERONS OVER THE YEARS:

## **WORLD CHAMPIONS - BRED BY OR OWNED/EXHIBITED BY WINDERMERE FARMS**

1. ANDERSON'S BENTLEY (JR. WORLD CHAMPION STALLION 2014)
2. BLACKHOME DUKE (RES. SR. & RES. WORLD CHAMPION STALLION 1986)
3. BLUE RIBBON FARMS PRINCE (WORLD CHAMPION STALLION 2006)
4. SKIP'S CHALLENGER (WORLD CHAMPION GELDING 2010)
5. WALKERBRAE SNIPER (SR. WORLD CHAMPION STALLION 2022)
6. WINDERMERE'S BLACKOUT (RES. JR. CHAMPION STALLION 1995)
7. WINDERMERE'S CASSANDRA (RES. JR. CHAMPION MARE 1995)
8. WINDERMERE'S DEIDRE (SUPREME WORLD CHAMPION 2008, RES. WORLD CHAMPION MARE 2010, JR. WORLD CHAMPION MARE 2006)
9. WINDERMERE'S ELIMINATOR (JR. WORLD CHAMPION STALLION 2004)
10. WINDERMERE'S GLAMOR GIRL (RES. JR. CHAMPION MARE 2006)
11. WINDERMERE'S INFERNO (WORLD CHAMPION STALLION 2008)
12. WINDERMERE'S KOMET (WORLD CHAMPION GELDING 2004)
13. WINDERMERE'S NORTH AMERICAN MAID (SUPREME WORLD CHAMPION 2010)
14. WINDERMERE'S TAYLER MAID (JR. WORLD CHAMPION MARE 1995)

## **NATIONAL CHAMPIONS - BRED BY OR OWNED/EXHIBITED BY WINDERMERE FARMS**

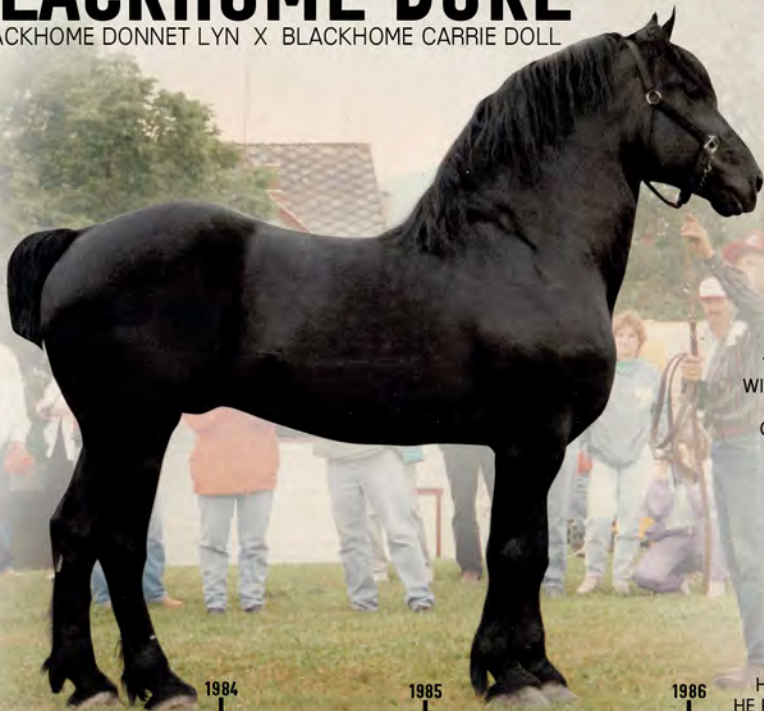
1. ANDERSON'S BENTLEY (3X NATIONAL GRAND CHAMPION STALLION)
2. BLACKHOME DUKE (NATIONAL GRAND CHAMPION STALLION)
3. BRIAR HILL TRADEMARK (NATIONAL GRAND CHAMPION STALLION)
4. CAMILLE (NATIONAL GRAND CHAMPION MARE)
5. LEGENDARY ROAD (NATIONAL GRAND CHAMPION STALLION)
6. WALKERBRAE SNIPER (NATIONAL GRAND CHAMPION STALLION)
7. WAPSI VIEW FANTASY (NATIONAL GRAND CHAMPION MARE)
8. WINDERMERE KING CONG (NATIONAL GRAND CHAMPION STALLION)
9. WINDERMERE'S DEIDRE (3X NATIONAL GRAND CHAMPION MARE)
10. WINDERMERE'S ELIMINATOR (NATIONAL GRAND CHAMPION STALLION)
11. WINDSONG'S GAMBLER (NATIONAL GRAND CHAMPION STALLION)

## **OTHER WORLD/NATIONAL CHAMPIONSHIPS - [TO NAME A FEW]**

1. WORLD CHAMPION OPEN GET OF SIRE [MULTIPLE]
2. WORLD CHAMPION SR. PRODUCE OF DAM
3. WORLD CHAMPION BEST TEN HEAD
4. WORLD CHAMPION MARE TEAM [MULTIPLE]
5. WORLD CHAMPION MARE UNICORN
6. WORLD CHAMPION MARE FOUR
7. WORLD CHAMPION MEN'S CART
8. WORLD CHAMPION YOUTH SHOWMAN
9. NATIONAL CHAMPION MARE SIX
10. NATIONAL CHAMPION MARE TEAM [MULTIPLE]
11. NATIONAL CHAMPION MARE CART
12. NATIONAL CHAMPION OPEN GET OF SIRE

# 1983 - 1994 BLACKHOME DUKE

BLACKHOME DONNET LYN X BLACKHOME CARRIE DOLL



BLACKHOME DUKE, A LINE-BRED DOUBLE GRANDSON OF ROLLING ACRES LEONET, WAS PURCHASED IN 1984 FROM ONE OF HISTORY'S GREATEST PERCHERON BREEDERS, MR. REGINALD BLACK. IMPORTED TO THE UNITED STATES FROM HIS ONTARIO, CANADA HOME AS A YEARLING, DUKE WOULD GO ON TO BECOME ONE OF THE MOST INFLUENTIAL AND REVOLUTIONARY STALLIONS YET SEEN IN THE MODERN ERA OF THE PERCHERON BREED. WITH HARD, CHISELED JOINTS, AMPLE FLAT BONE OF THE HIGHEST QUALITY, AND FITTED WITH A TREMENDOUS SET OF BOTTOMS, DUKE'S UNDERPINNING WAS JUST AS ONE WOULD EXPECT FROM A HORSE THAT WAS BRED BY THE EVER-SCRUPULOUS REG BLACK. HOWEVER, IT WAS DUKE'S TREMENDOUS LENGTH OF SHOULDER AND HIP THAT GAVE HIM THE BALANCE THAT TRULY SET HIM APART AND WAS WITHOUT EQUAL AT THAT TIME. WITH HIS LONG, LAID BACK SHOULDER, AND LONG HIP WITH A BEAUTIFULLY SET HIND LEG, DUKE RECEIVED A NATURALLY HIGH HEAD SET AND THE NATURAL, UNMANUFACTURED 4-CORNER MOTION WHICH BREEDERS STILL STRIVE FOR TODAY. HIMSELF A LINE-BRED STALLION, AND YET STILL AN OUTCROSS TO MOST OF THE AMERICAN BLOODLINES THAT WERE PREVALENT IN OUR BROODMARE BAND - AS WELL AS MANY OTHER PERCHERON FARMS ACROSS THE COUNTRY DURING THAT ERA - DUKE'S GENETIC PREPOTENCY, COUPLED WITH THE BENEFITS OF HYBRID VIGOR, QUICKLY HELPED HIM PRODUCE A GROUP OF OFFSPRING THAT WERE EXCEEDINGLY CONSISTENT IN TYPE, AND VERY OFTEN EXPRESSED MORE OF THE DESIRABLE EXTREMES IN THEIR STRUCTURE AND PERFORMANCE THAN DID EITHER OF THEIR PARENTS. DUKE QUICKLY PROVED HIMSELF AS A TRUE BREEDING HORSE, TIME AND AGAIN SHOWING HIS ABILITY TO OUT-PRODUCE HIMSELF AS HIS OFFSPRING BEGAN MAKING NAMES FOR THEMSELVES ON THE TANBARK. THE SUCCESS OF HIS GET PROPELLED DUKE TO THE FOREFRONT OF THE PERCHERON ASSOCIATION'S PREMIER SIRE LIST FROM THE VERY ON-SET OF THE PROGRAM'S REINSTATEMENT. AND HE WOULD GO ON TO HOLD THE PREMIER SIRE TITLE FOR 9 CONSECUTIVE YEARS. DUKE LEFT US WITH AN ONGOING LEGACY THROUGH HIS NUMEROUS CELEBRATED BREEDING SONS AND DAUGHTERS, ALIKE. DUKE IS RESPONSIBLE FOR PROPELLING OUR BREEDING PROGRAM FORWARD WITH HIS UNRIVELLED DOMINANCE AND CONSISTENCY IN THE TYPE OF PERCHERONS HE PRODUCED DURING HIS REIGN ATOP THE PINNACLE OF THE PERCHERON BREED.

1984

BLACKHOME DUKE IS ACQUIRED

1985

JR. & GR. CH. - NAT'L PERCHERON SHOW

1986

RES. SR. & RES. GR. CH. - WORLD PERCHERON CONGRESS

# 1986 - 2005 CAMILLE

SOUTH VALLEY PRINCE HA HA X MIDNIGHT CONTESSA



CAMILLE IS A PRODUCT OF THE RENOWNED BREEDING PROGRAM OF MRS. R.L. ROBINSON OF RICHLAND, MICHIGAN. THE ROBINSON'S HAD PREVIOUSLY SOUGHT AN OUTCROSS FOR THE TYPEY AND CORRECT LA REX DAUGHTERS THEY HAD RETAINED IN THEIR BREEDING PROGRAM.

THIS LED THEM TO THE NOW FAMOUS, CANADIAN-BRED SON OF JUSTAMERE SHOWTIME, SOUTH VALLEY DID-IT. THE HYBRID VIGOR WORKED AND NUMEROUS OFFSPRING FROM THIS CROSS WOULD GO ON TO BE SOME OF THE MOST INFLUENTIAL PERCHERONS OF THEIR DAY, SHAPING THE BREED IN SUCH PROFOUND WAYS THAT THEIR IMPACT CAN STILL BE SEEN NEARLY A HALF CENTURY LATER.

CAMILLE'S DAM, MIDNIGHT CONTESSA, WAS ONE OF THESE INFLUENTIAL DID-IT OFFSPRING AND WAS RETAINED IN THE ROBINSON'S BROODMARE BAND. MRS. R. L. (MARILYN) ROBINSON, AND HER HUSBAND BOB, WOULD FOLLOW UP THEIR OUTCROSS GENERATION AND TRIPLE-DOWN ON JUSTAMERE SHOWTIME BLOOD, WITH THE USE OF THE LINE-BRED DOUBLE-GRANDSON OF SHOWTIME NAMED SOUTH VALLEY PRINCE HA HA. THE RESULT OF THIS LINE BREEDING WITH SOUTH VALLEY DID-IT DAUGHTERS WAS A GENERATION OF PERCHERONS THAT OFTEN EXCEEDED THEIR PARENTAGE IN SIZE AND SUBSTANCE, WHILE RETAINING CORRECTNESS, QUALITY AND ATHLETICISM.

IN 1988 WE SAW CAMILLE- A BIG, LONG-NECKED AND RANGEY 2 YEAR OLD MARE IN THE ROBINSON'S SHOW STRING AND IT PROMPTED US TO INQUIRE IF SHE WAS FOR SALE, AS WE WERE ACTIVELY SEEKING OUT HIGHER CALIBER BROODMARES TO CROSS WITH BLACKHOME DUKE. EVENTUALLY BOB RELENATED AND CAMILLE WAS ADDED TO OUR BROODMARE BAND. HER FIRST FOUR OFFSPRING WERE Sired BY DUKE, INCLUDING, THE 2-TIME ALL AMERICAN AND NATIONAL CHAMPION, WINDERMERE KING CONG, THE 4-TIME ALL-AMERICAN AND RESERVE JUNIOR WORLD CHAMPION, WINDERMERE'S CASSANDRA, AND THE ALL AMERICAN WINDERMERE'S LIMITED EDITION. LATER IN LIFE SHE WOULD PRODUCE THE RESERVE ALL AMERICAN WINDERMERE'S TRADEMARK, AND THE RESERVE ALL-AMERICAN WINDERMERE'S CAMILLA. IN OTHER CASES, SOME OF HER OFFSPRING WHICH WERE NEVER SHOWN, WENT ON TO BECOME SOME OF OUR TOP PRODUCING BROODMARES; AS WAS THE CASE WITH BOTH WINDERMERE'S KATRINA AND WINDERMERE'S CASHMERE.

CAMILLE BECAME A TRUE FOUNDATION MARE HERE AT WINDERMERE FARMS, AND THROUGH THE INFLUENCE OF HER PROLIFIC OFFSPRING SHE HAS IN MANY WAYS EARNED HER SPOT AS A FOUNDATION MARE AND MATRIARCH OF THE PERCHERON BREED, AS WELL.

1988

ACQUISITION OF CAMILLE

1991

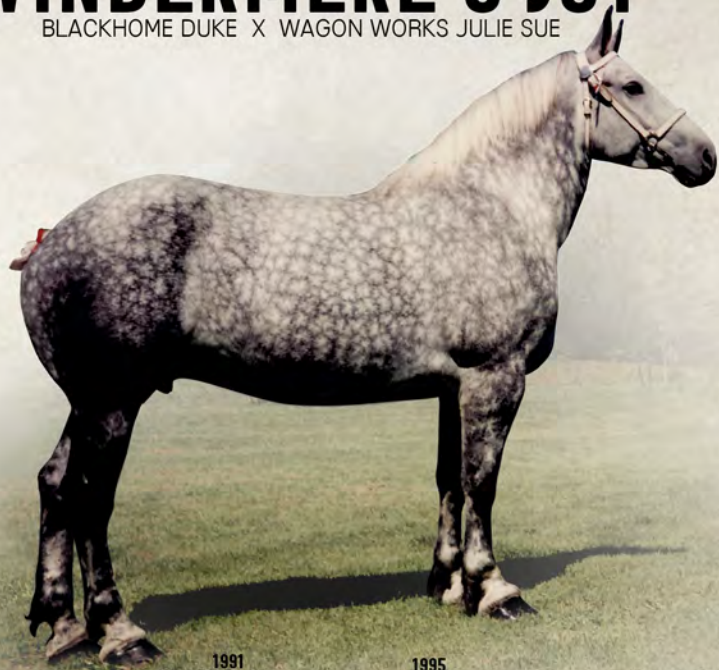
GR. CH. MARE - NAT'L PERCHERON SHOW

1993

WINDERMERE KING CONG IS BORN

# 1988 - 2010 WINDERMERE'S JOY

BLACKHOME DUKE X WAGON WORKS JULIE SUE



WINDERMERE'S JOY WAS ONE OF THE FIRST BLACKHOME DUKE OFFSPRING TO HIT THE SHOWRING. JOY HAD AN ABUNDANCE OF BREED TYPE, A GOOD HEEL AND THE KIND OF FLAT BONE THAT BLACKHOME DUKE PRODUCED WITH GREAT CONSISTENCY. JOY WAS A DAUGHTER OF WAGON WORKS JULIE SUE, A BIG GREY MARE THAT WAS ACQUIRED FOR THE PURPOSE OF CROSSING HER WITH DUKE. STUDENTS OF THE PERCHERON BREED WILL APPRECIATE THE BLOODLINES BEHIND WAGON WORKS JULIE SUE. OSTRALIEN'S KARENO, A LONG NECKED STALLION APPEARS BEHIND HER SIRE, AND HER DAM IS LINE-BRED TO THE RENOWNED KONCARHOPE. ONE OF THOSE TIMES COMES BY WAY OF HER MATERNAL GREAT-GRANDSIRE, THE STALLION RICINUS KONCARLAET, A KONCARHOPE SON WHO WAS GREATLY ADMIRIED BY ART BAST'S SON, JON, FOR HIS MODERNNESS, LENGTH OF NECK, CHISELED BONE AND ATHLETICISM, OF WHICH JON DESCRIBED AS BEING FAR AHEAD OF THE STALLION'S TIME.

A 2-TIME ALL-AMERICAN MARE, AND RESERVE NATIONAL CHAMPION, WINDERMERE'S JOY HAD A SUCCESSFUL SHOW CAREER BEFORE TRANSITIONING TO A SUCCESSFUL PRODUCTION RECORD AS BROODMARE. IN 1994, THE DECISION WAS MADE TO CROSS JOY WITH THE MCGEE SON, JUSTA-CLASSIC. THE COMBINATION OF MODERN PERCHERONS WITH LENGTH OF NECK AND SIZE ON HER DAMS SIDE, WITH THE CONFORMATIONAL CORRECTNESS, SLOPE OF SHOULDER AND NATURAL ATHLETICISM FROM BLACKHOME DUKE WOULD PROVE A SUCCESSFUL CROSS WITH A MCGEE-BRED HORSE LIKE JUSTA-CLASSIC, AND THE BREEDING WOULD PRODUCE THE STALLION WINDERMERE'S JUST INCREDIBLE. JUSTIN WOULD BECOME ONE OF THE EARLY EXAMPLES OF HOW THE DUKE AND MCGEE BLOODLINES WOULD SO OFTEN MESH SO WELL. STANDING 18.3HH, JUSTIN'S CAREER AS A STALLION WOULD LAST ONLY A FEW YEARS, AND ALTHOUGH HE PRODUCED A LIMITED NUMBER OF OFFSPRING DURING THIS TIME, HIS SONS AND DAUGHTERS WOULD, NEVERTHELESS, MAKE A LASTING MARK ON THE BREED.

1991

RES. NAT'L GR. CH. MARE

1995

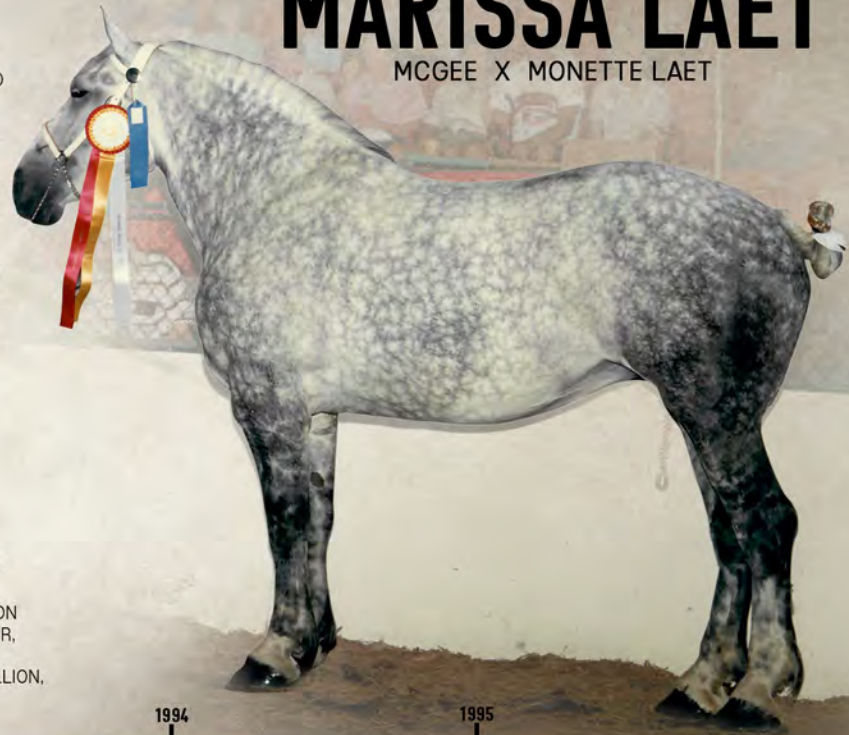
WINDERMERE'S JUST INCREDIBLE IS BORN

2006

WINDERMERE'S GLAMOUR GIRL, OUT OF JOY - RES. JR. WORLD CH. MARE

# MARISSA LAET

MCGEE X MONETTE LAET



MARISSA LAET IS A FULL SISTER TO MG'S BOBBIE MCGEE, AND BEFORE WE WERE ABLE TO ACQUIRE BOBBIE FROM THE BAST FAMILY, MARISSA FIRST JOINED THE BROODMARE RANKS HERE AT WINDERMERE FARMS. MARISSA WAS ALSO A BIG MARE FOR HER DAY, AND WHEN WE BEGAN CROSSING HER WITH BLACKHOME DUKE, SHE PRODUCED NUMEROUS OFFSPRING THAT WERE CAMPAIGNED SUCCESSFULLY IN THE SHOW RING AND BEGAN TO FURTHER ESTABLISH MARISSA'S REPUTATION AS A BROODMARE. FROM DUKE, SHE PRODUCED THE ALL-AMERICAN STALLIONS WINDERMERE'S BLACKOUT AND WINDERMERE'S KING ARTHUR, AS WELL AS THE RES. ALL AMERICAN, WINDERMERE'S GOLIATH. QUICKLY, SHE BECAME ONE OF THE MOST PROLIFIC AND PROFITABLE BROODMARES IN THE BARN THROUGH THE SALE OF HER CHAMPION OFFSPRING. ALTHOUGH WE DID NOT RETAIN ONE OF HER DIRECT SONS OR DAUGHTERS, MARISSA CAN BE FOUND BEHIND THE MAJORITY OF OUR CURRENT BREEDING STOCK BY WAY OF HER MOST SUCCESSFUL BREEDING SON, DREAMTIME'S SILVERADO.

SILVERADO WAS JUST A LANKY YEARLING WHEN WE TRAVELED TO WISCONSIN TO PICK UP HIS DAM AND BRING HER BACK TO WINDERMERE FARMS, BUT HE SHOWED MODERNNESS AND PROMISE AND SO A PHONE CALL TO DORN WISE OF TENNESSEE WAS MADE-SINCE WE WERE AWARE OF HIS SEARCH FOR A JR. HERD SIRE-TO TELL HIM ABOUT THE YEARLING SON OF THE MCGEE MARE WE JUST ACQUIRED. DORN BOUGHT SILVERADO ON THE SPOT, AND WOULD OWN THE HORSE UNTIL HIS DEATH MANY YEARS LATER.

IN A PRIME EXAMPLE OF HOW PERCHERON BREEDERS HAVE FOUND WAYS TO WORK TOGETHER FOR THE BENEFIT OF THE BREED, DORN WISE CALLED US UPON LEARNING OF THE UNTIMELY DEATH OF BLACKHOME DUKE AND OFFERED DREAMTIME'S SILVERADO FOR USE. FROM THAT COOPERATIVE EFFORT, MARISSA LAET'S PLACE IN PERCHERON HISTORY WAS CEMENTED THROUGH THE SILVERADO/CAMILLE DAUGHTER, WINDERMERE'S CASHMERE, WHO WOULD BECOME THE DAM OF THE ALL-AMERICAN, NATIONAL CHAMPION AND JUNIOR WORLD CHAMPION STALLION, WINDERMERE'S ELIMINATOR.

1989

MARISSA LAET IS ACQUIRED

1994

WINDERMERE'S KING ARTHUR IS ALL-AMERICAN

1995

WINDERMERE'S BLACKOUT IS RES. JR. WORLD CHAMPION

# MG's BOBBIE MCGEE

McGEE X MONETTE LAET



WHEN JON BAST LOADED LA RUBY ONTO HIS TRAILER AT THE FARM OF JOHN HAY, HE MAY NOT HAVE FULLY APPRECIATED HOW THIS DECISION WOULD END UP FOREVER CHANGING THE COURSE OF PERCHERON HISTORY. WHEN SHE WAS BRED TO THE SOUTH VALLEY DID-T SON, DID, (FROM THE BREEDING PROGRAM OF MRS. R.L. ROBINSON OF RICHLAND, MICHIGAN), A NEW ERA OF PERCHERONS WAS ABOUT TO BEGIN. THE RESULT OF THIS BREEDING WAS THE BIG, UPSTANDING STALLION WE NOW KNOW AS, MCGEE. THE BAST FAMILY CAMPAIGNED THE 18.2HH STUD TO A NATIONAL CHAMPIONSHIP, AND BEGAN TO CROSS HIM ON THEIR ESTABLISHED BROODMARE BAND. CORRECT, TIDY AND FEMININE DAUGHTERS OF MAVERICK, (THE NATIONAL CHAMPION SON OF DRAKE FARMS CHIEF), SUCH AS MONETTE LAET, WOULD BENEFIT FROM MCGEE'S SIZE AND MASS- AS WELL AS HIS PROUD PRESENCE AND MODERN TYPE.

MG'S BOBBIE MCGEE IS A MONETTE LAET DAUGHTER Sired BY MCGEE THAT WAS A BIG, IMPRESSIVE MARE IN HER TIME WHO COULD STILL TURN HEADS IN ANY SHOW RING TODAY. WHEN SEARCHING FOR BIG, MODERN-TYPE MARES TO BREED TO BLACKHOME DUKE, BOBBIE BECAME A MARE THAT WE PURSUED TENACIOUSLY, FEELING SHE HAD THE ATTRIBUTES AND GENETICS THAT WE WANTED TO CROSS WITH DUKE. WHEN WE WERE FINALLY ABLE TO ACQUIRE HER FROM THE BAST'S, SHE WAS BRED TO DUKE AND PRODUCED SEVERAL ALL-AMERICAN OFFSPRING, INCLUDING THE 1995 JUNIOR WORLD CHAMPION MARE, WINDERMERE'S TAYLER MAID.

1990

BOBBIE MCGEE ACQUIRED


1993

WINDERMEWRE'S TAYLER MAID IS BORN

1993 - 2007

# WINDERMERE'S TAYLER MAID

BLACKHOME DUKE X MG'S BOBBIE MCGEE



WINDERMERE'S TAYLER MAID WAS THE BEST DAUGHTER OF THE LATE, GREAT BLACKHOME DUKE. HER 18.2HH STATUESQUE FIGURE AND CORRECT CONFORMATIONAL STRUCTURE WERE BUT A COMPLIMENT TO HER BEST ASSET OF SUPERIOR INTELLECT AND DISPOSITION. A HIGHLY TRAINABLE MINDSET, WITH A DESIRE TO PLEASE AND A LOVE FOR HARNESS IS WHAT TRULY SET HER APART FROM THE REST OF HER IMPRESSIVE SIBLINGS. WITH HER HALTER QUALITY COMBINED WITH A HITCH HORSE MIND SET, TAYLER WAS A MARE AHEAD OF HER DAY AND STILL EXEMPLIFIES THE KIND OF PERCHERON WE STRIVE TO BREED FOR IN OUR PROGRAM TODAY.

THIS 1995 JUNIOR WORLD CHAMPION AND ALL-AMERICAN SPENT TIME FILLING EVERY POSITION IN OUR MARE SIX HORSE HITCH BEFORE RETIRING TO THE BROODMARE PASTURE.

WE RETAINED HER DAUGHTER BY WINDERMERE'S JUST INCREDIBLE, WINDERMERE'S PERFECT MAID, IN OUR BREEDING PROGRAM.

TAYLER'S FINAL OFFSPRING, A BIG, RANGEY COLT FROM THE BREEDING TO A JUST INCREDIBLE SON, WINDERMERE'S ELIMINATOR, WOULD GROW INTO A 19HH STALLION THAT WOULD GO ON TO INFLUENCE THE BREED IN A LASTING WAY, JUST AS HIS GRAND SIRES AND DAMS HAD DONE BEFORE HIM.

THAT STALLION, WINDERMERE'S NORTH AMERICAN MAID, APTLY REFERRED TO AS "MOOSE" IN OUR BARN ON ACCOUNT OF HIS SIZE AND MASS, BECAME SUPREME WORLD CHAMPION AT THE 2010 WORLD PERCHERON CONGRESS.



1995

JR. WORLD CHAMPION

2006

WINDERMERE'S NORTH AMERICAN MAID ("MOOSE") IS BORN

# WINDERMERE'S JUST INCREDIBLE

Just A Classic x Windermere's Joy



WHEN DISCUSSING INFLUENTIAL SIRES OF THE BREED, IT IS HARD TO THINK OF A STALLION WHO MADE A MAJOR AND LASTING IMPACT ON THE BREED IN AS SHORT OF A TIME AS DID JUST INCREDIBLE. THE CROSSING OF BLACKHOME DUKE AND MCGEE BLOODLINES BECAME A PROVEN RECIPE FOR SUCCESS OVER TIME AND JUSTIN IS AN EXAMPLE OF HOW THESE FAMILIES OF PERCHERONS SO OFTEN COMPLIMENT EACH OTHER WHEN THEY APPEAR IN THE SAME PEDIGREE.

JUSTIN WAS A MASSIVE STALLION STANDING 18.3HH BAREFOOT AND VERY MUCH AHEAD OF HIS TIME. HIS DOMINANCE AND CONSISTENCY IN PRODUCING SIZE, GAVE US ANOTHER GROUP OF BIG, MODERN MARES AND TRUE GENERATIONAL SIZE IN OUR MARE LINES. HIS SON, WINDERMERE'S ELIMINATOR, OUT OF OUR SILVERADO/CAMILLE DAUGHTER, WINDERMERE'S CASHMERE, WAS SUCH AN EXTREME AND MODERN COLT - EXCEEDING EVEN HIS SIRE - THAT WE MADE THE CHOICE TO GELD JUSTIN AND HE WAS SOLD TO THE HEINZ PERCHERON EXHIBITION HITCH IN 2002. ELIMINATOR WOULD GO ON TO BE ALL-AMERICAN, NATIONAL CHAMPION AND A JR. WORLD CHAMPION STALLION, AND MOST CONSEQUENTLY, THE SIRE OF WINDERMERE'S NORTH AMERICAN MAID.

1999

RESERVE ALL-AMERICAN STALLION

2002

JUSTIN SOLD TO HEINZ HITCH

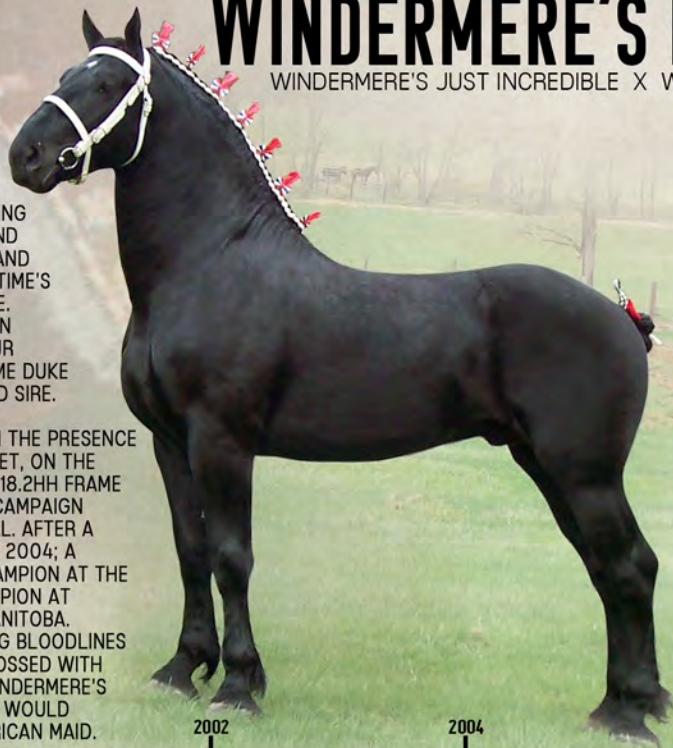
2002-2013

# WINDERMERE'S ELIMINATOR

WINDERMERE'S JUST INCREDIBLE X WINDERMERE'S CASHMERE

THE MOST SUCCESSFUL SON OF WINDERMERE'S JUST INCREDIBLE, IN BOTH THE BREEDING SHED AND THE SHOW RING, WINDERMERE'S ELIMINATOR IS THE RESULT OF MULTIPLE GENERATIONS OF BREEDING WITH A FOCUS ON SIZE, QUALITY AND SUBSTANCE, AND MODERN-TYPE PERCHERONS WITH LENGTH OF NECK AND HEAD CARRIAGE. HIS DAM IS A DAUGHTER OF DREAMTIME'S SILVERADO, OUT OF OUR FOUNDATION MARE, CAMILLE. SHE WAS ONE OF THE RESULTING OFFSPRING OF DORN WISE OFFERING THE USE OF SILVERADO TO COVER OUR MARES AFTER THE UNEXPECTED DEATH OF BLACKHOME DUKE HAD LEFT US, TEMPORARILY, WITHOUT A SENIOR HERD SIRE.

WITH SIZE FROM JUST INCREDIBLE, AS WELL AS FROM THE PRESENCE OF CAMILLE AND THE MCGEE DAUGHTER, MARISSA LAET, ON THE BOTTOM SIDE OF HIS PEDIGREE, ELIMINATOR GOT HIS 18.2HH FRAME HONESTLY. HE WAS UNDEFEATED DURING HIS FOAL CAMPAIGN AND WAS NAMED 2002 ALL-AMERICAN STALLION FOAL. AFTER A YEAR OFF, HE WAS AGAIN BROUGHT OUT TO SHOW IN 2004; A YEAR THAT WOULD SEE HIM NAMED JR. & GRAND CHAMPION AT THE NATIONAL PERCHERON SHOW, AND JR. WORLD CHAMPION AT THE WORLD PERCHERON CONGRESS IN BRANDON, MANITOBA. BREEDING HIM BACK ONTO MARES OF DUKE AND CONG BLOODLINES PROVED CONSISTENTLY SUCCESSFUL, AND WHEN CROSSED WITH THE ALL-AMERICAN BLACKHOME DUKE DAUGHTER, WINDERMERE'S TAYLER MAID, A FUTURE SUPREME WORLD CHAMPION WOULD RESULT - THE STALLION, WINDERMERE'S NORTH AMERICAN MAID.



2002

ALL-AMERICAN

2004

JR. CH. - WORLD PERCHERON CONGRESS

2004

JR. & GR. CH. - NAT'L PERCHERON SHOW

2006-2014

# WINDERMERE'S NORTH AMERICAN MAID "MOOSE"

WINDERMERE'S ELIMINATOR X WINDERMERE'S TAYLER MAID

MOOSE WAS A 19HH STALLION WITH EXTREMES IN ABOUT EVERY ASPECT. HE HAD GREAT QUALITY OF FOOT AND BONE, WITH A FLAT HOCK AND EXCELLENT CURB. HIS RING PRESENCE WAS SECOND TO NONE, AND HE RECEIVED HIS SUPERIOR TEMPERAMENT AND HIGHLY TRAINABLE MIND FROM HIS MOTHER, WINDERMERE'S TAYLER MAID. ALL OF THIS COMBINED, HELPED TO PROPEL MOOSE TO THE PINNACLE OF HIS SHOW CAREER WHEN HE WAS NAMED THE 2010 SUPREME WORLD CHAMPION IN DES MOINES, IOWA.

MOOSE GAVE THE PERCHERON BREED A GROUP OF GREAT BROODMARE DAUGHTERS IN ADDITION TO BEING A PROMINENT PRODUCER OF SONS. HE IS THE SIRE OF ANDERSON'S BENTLEY, AND THROUGH HIM, MOOSE HAS DISPLAYED HIS GENETIC POWER AS A SIRE IN PROVING HIS ABILITY TO OUT-PRODUCE HIMSELF. NOW, IN THE FOLLOWING GENERATION, ANDERSON'S BENTLEY HAS BEEN DISPLAYING THE SAME PREPOTENCY, AS A PROVEN SIRE OF OFFSPRING THAT EXCEED BOTH THEIR PARENTS.

WE HAVE LIMITED QUANTITIES OF FROZEN SEMEN BREEDINGS AVAILABLE FROM MOOSE. CONTACT US FOR DETAILS ABOUT BREEDING TO THIS LEGENDARY STALLION.



2010

*© Stina Phinney*

2010

2014

SUPREME WORLD CHAMPION


ALL-AMERICAN

WORLD CHAMPION OPEN GET OF SIRE

1993 - 2007

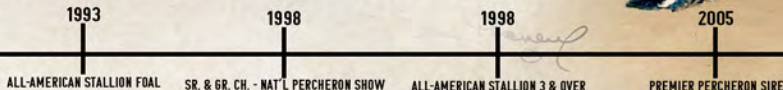
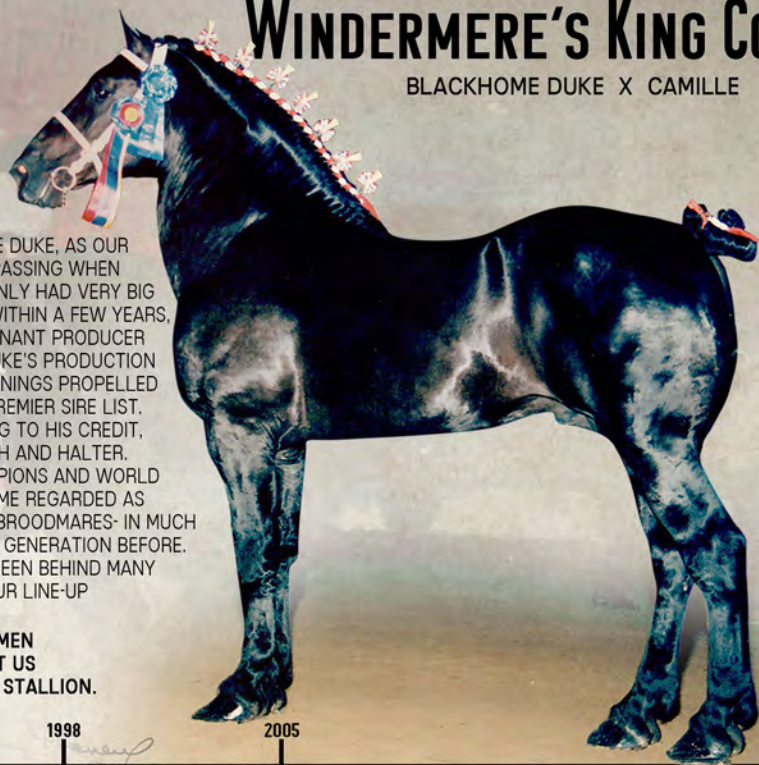
# WINDERMERE'S KING CONG

BLACKHOME DUKE X CAMILLE



WE HAD RETAINED CONG TO FOLLOW HIS SIRE, BLACKHOME DUKE, AS OUR JUNIOR HERD SIRE. WITH BLACKHOME DUKE'S UNTIMELY PASSING WHEN HE WAS IN THE PRIME OF HIS BREEDING CAREER, CONG SUDDENLY HAD VERY BIG SHOES TO FILL AS A YOUNG UNPROVEN STALLION. HOWEVER, WITHIN A FEW YEARS, CONG WAS PROVING HIMSELF TO BE THE SAME KIND OF DOMINANT PRODUCER AS HIS SIRE, AND BEFORE LONG, HE WAS EVEN SURPASSING DUKE'S PRODUCTION RECORD IN MANY WAYS. IN 2005, HIS OFFSPRING'S SHOW WINNINGS PROPELLED HIM TO THE TOP SPOT ON THE PERCHERON ASSOCIATIONS PREMIER SIRE LIST. NOW, CONG HAS NUMEROUS NATIONAL CHAMPION OFFSPRING TO HIS CREDIT, AND SEVERAL WORLD CHAMPION OFFSPRING IN BOTH HITCH AND HALTER. FURTHERMORE, HIS DAUGHTERS HAVE RAISED NATIONAL CHAMPIONS AND WORLD CHAMPIONS OF THEIR OWN, AND CONG MARES WOULD BECOME REGARDED AS SOME OF THE INDUSTRY'S MOST SUCCESSFUL AND SOUGHT AFTER BROODMARES- IN MUCH THE SAME WAY AS BLACKHOME DUKE DAUGHTERS HAD BECOME A GENERATION BEFORE. CONG'S GENETIC CONTRIBUTION TO OUR HERD CAN STILL BE SEEN BEHIND MANY OF OUR MARES, AND SEVERAL OF THE STALLIONS IN OUR LINE-UP HAVE HIS INFLUENCE IN THEIR PEDIGREE.

**WE HAVE LIMITED QUANTITIES OF FROZEN SEMEN BREEDINGS AVAILABLE FROM CONG. CONTACT US FOR DETAILS ABOUT BREEDING TO THIS LEGENDARY STALLION.**



# BRIAR HILL TRADEMARK

CHEVRON X ROLLING HILLS SHNIA



KNOWING THE HISTORY OF THE MANY ATHLETIC HORSES WITH DRIVING MENTALITIES IN HIS PEDIGREE, WE ACQUIRED TRADEMARK ON ACCOUNT OF HIS EXTREME ATHLETICISM. UNLIKE MANY OF THE HITCH HORSES THAT WERE EMERGING AT THAT TIME PERIOD, TRADEMARK STILL HAD RETAINED AN AMPLE AMOUNT OF FOOT AND BONE, WITH A SUPREME QUALITY OF HOOF TEXTURE. A RARE FIND IN A MODERN PERCHERON, TRADEMARK DID NOT HAVE ANY MCGEE BLOOD IN HIS PEDIGREE, AND WE FELT WE COULD SUCCESSFULLY USE HIM ON OUR BIGGER DUKE, CONG AND JUST INCREDIBLE BROODMARES. BY THIS TIME, WE HAD PLANS TO RETAIN WINDERMERE'S NORTH AMERICAN MAID ("MOOSE") AS A FUTURE HERD SIRE, AND FELT TRADEMARK'S GENETIC MAKEUP COULD COMPLIMENT HIM IN THE BREEDING BARN.

DURING HIS CAREER IN THE SHOW RING, TRADEMARK EARNED REPEAT ALL-AMERICAN STALLION HONORS AS WELL AS A NATIONAL CHAMPIONSHIP TO HIS CREDIT.

HE WAS SELECTIVELY AND SUCCESSFULLY UTILIZED ON DUKE, CONG, JUSTIN AND MOOSE MARES IN OUR PROGRAM AND THAT OF OUR CUSTOMERS', AND WE RETAINED A FEW SELECT DAUGHTERS IN OUR BROODMARE BAND; AND THEY CONTINUE TO HAVE A POSITIVE IMPACT AND INFLUENCE ON OUR BREEDING PROGRAM, TODAY.

2008

2008

2009

BRIAR HILL TRADEMARK IS ACQUIRED

ALL-AMERICAN 2 YR. OLD STALLION

NAT'L GR. CH. STALLION